

Lacapelette



7
Rooms



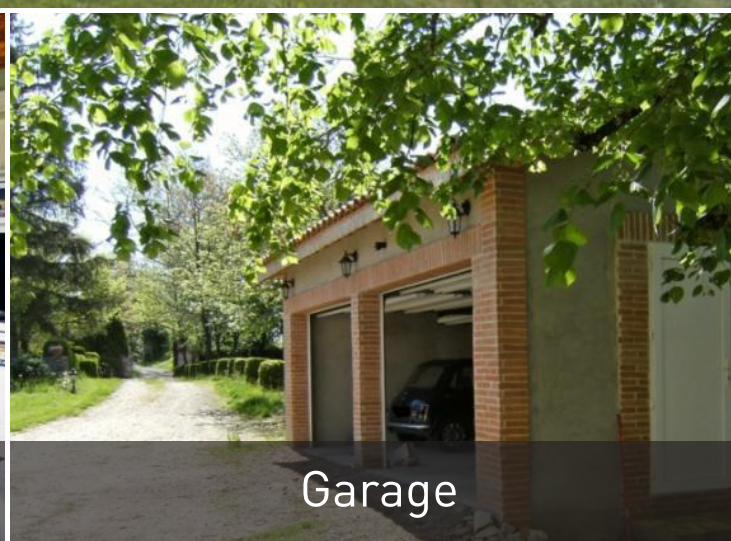
3
Bathrooms

FEATURES

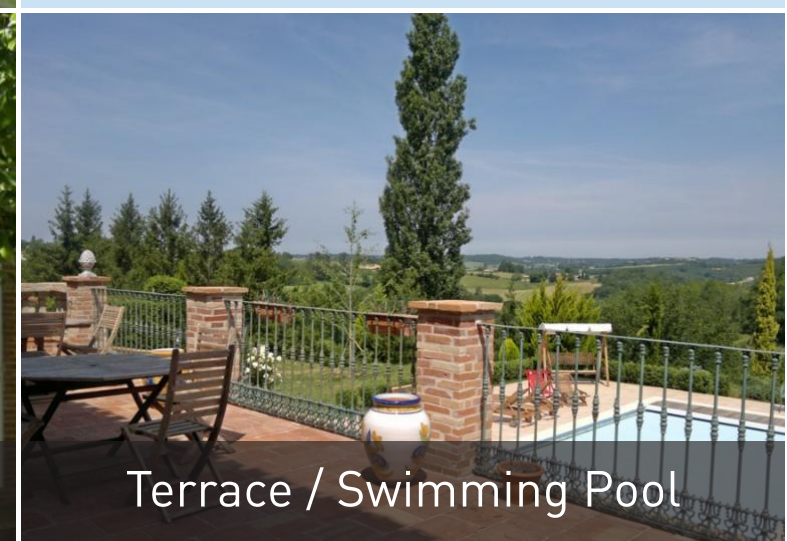
- Land surface area in m² : 183 500m²
- Surface area in m² : 500m²
- Number of rooms : 12
- Garage : 3 parking spaces
- Terrace
- Swimming pool



Large Fireplace



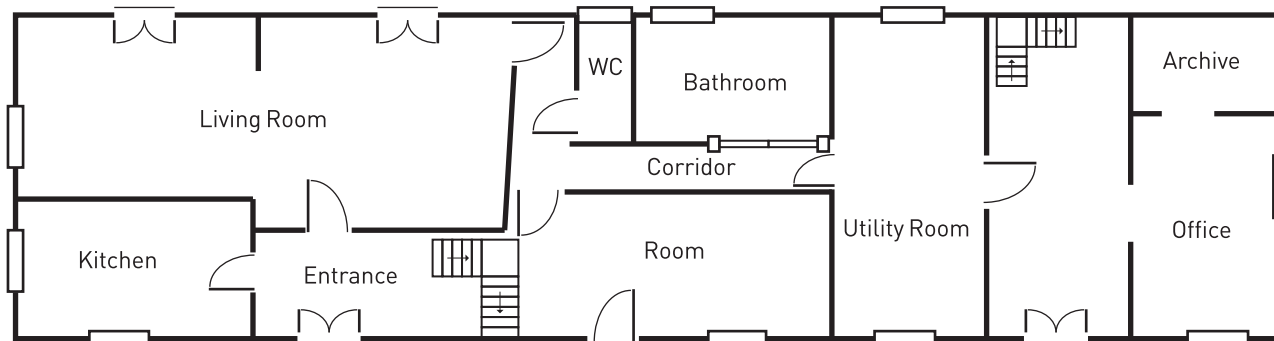
Garage



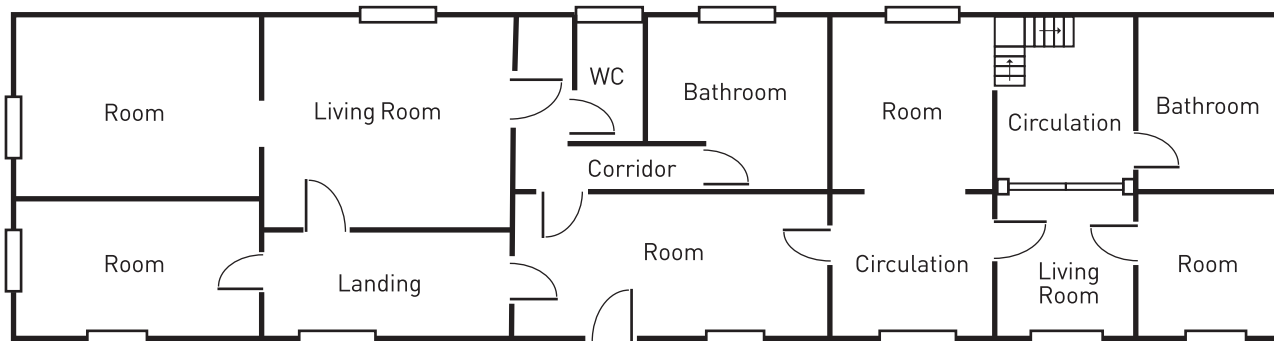
Terrace / Swimming Pool



1st Floor



2nd Floor



DESCRIPTION

Halfway between Lauzerte (one of the most beautiful French village) and Moissac (historical city on the French way of St. James), one hour from Toulouse and its airport, close to A62/A20 highways, in southern Quercy region, a two level charming renovated 500 sq meters (600 Sq Yards) stone and brick country house of the 17th century (1670) with buttresses, including seven bedrooms (two of them master suites), three living rooms (two of them with large fireplaces), one dining room, one large fully-fitted kitchen, two bathrooms, one shower room, three WC, one office with storeroom, three utility rooms, garage (for three cars), large terrace of 60 sq meters (72 Sq yards), swimming pool and a landscaped garden with an open outlook, dominating the valley at the heart of a 17 hectares (42 acres) property (of meadows, forest and fruit trees). Geothermal heating. Internet ADSL connection. Can be easily transformed in guest house due to the configuration in two independent parts.

